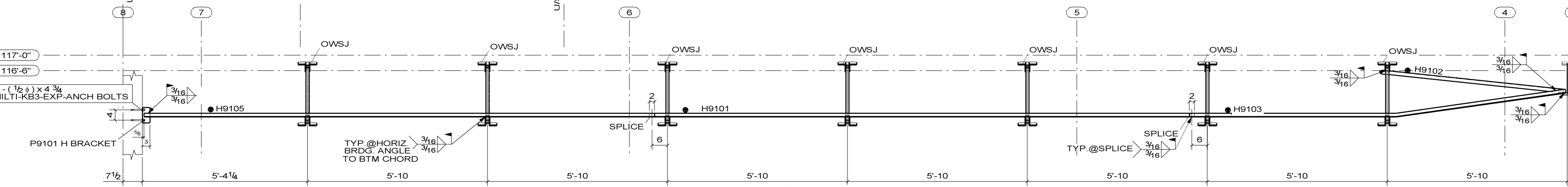
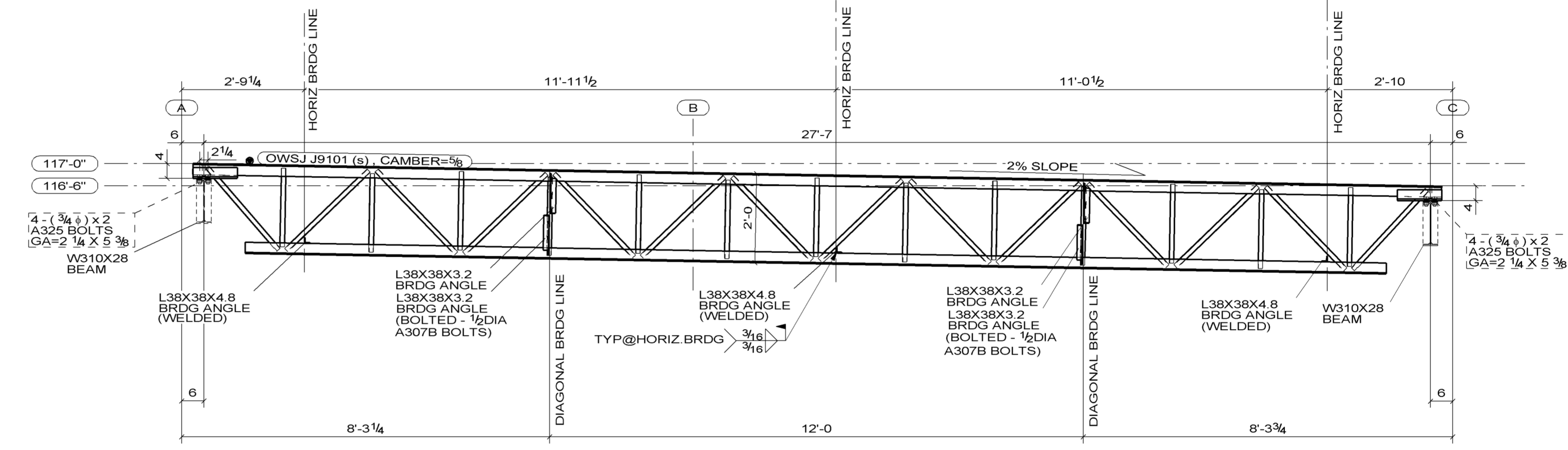


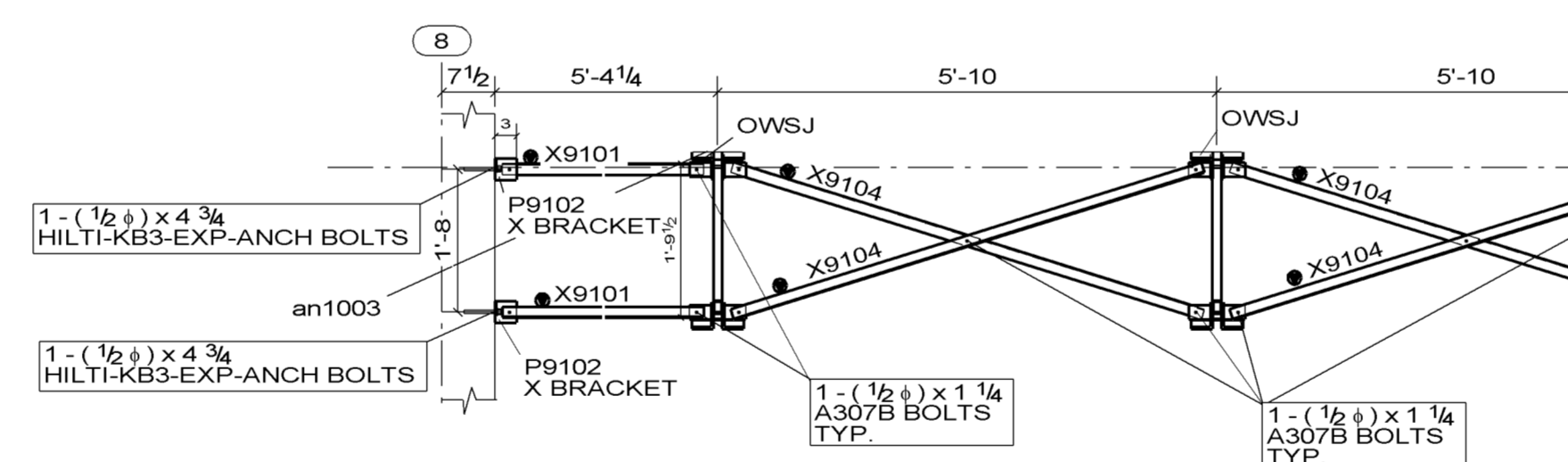
ROOF JOIST FRAMMING - PLAN



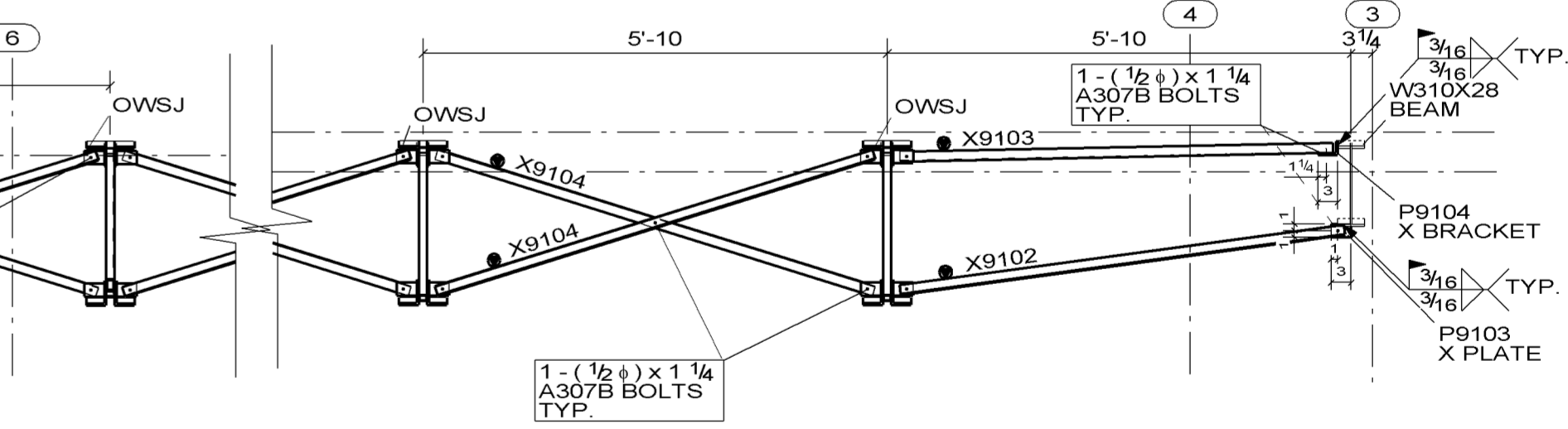
**SECTION B - B
(HORIZONTAL BRIDGING)**



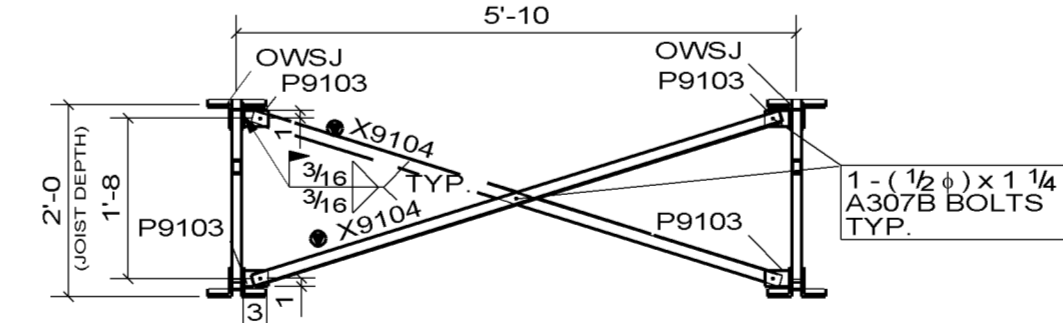
SECTION A - A



**SECTION C - C
(DIAGONAL BRIDGING)**



**SECTION D - D
(DIAGONAL BRIDGING)**



**SECTION E - E
NEAR TO MECH OPEN. (ONE LOCATION)
(DIAGONAL BRIDGING)**

PAINT NOTES:

- I. SURFACE PREPARATION: SSPC-SP-6 TYP. @ ALL STEEL.
- II. SHOP PRIMER AND FIELD TOUCHUP: GSB1-GP-40 TYP. @ ALL STEEL (EXCEPT GALVINIZED MEMBERS, JOISTS AND STEEL DECK PROFILES) JOISTS - PRIMER CGSB-40
- III. TOP COAT (EXPOSED STEEL ONLY):
 - STEEL IN BASEMENT AREA: LIGHT GREY
 - CHANNELS AND HSS @ MAIN DOOR, DOOR STEEL FRAME: TO MATCH DOOR
 - ALL ROOF CHANNELS (ABOVE MEZZ. FLOOR): WHITE
 - ROOF OPENING FRAMES: WHITE
 - DECORATIVE CHANNEL FRAMING (CANOPY): LIGHT GREY
 - STAIR NOSING: YELLOW
 - STAIR MTL. RISER CLOSURE: TO MATCH TREAD
 - HANDRAILS AND LADDER: NATURALLY CALM
 - BOLLARD POSTS: BLUE w/ 100mm YELLOW STRIPE ON TOP (SET 50mm DOWN FROM TOP)
 - GARBAGE ENCLOSURE (EXCEPT DECK PROFILE): P-2 GREY
 - GUARDRAIL, SECURITY FENCE AND GATE: NATURALLY CALM
 - JOISTS AND METAL DECK PROFILES: WHITE

REF.: A4.0.1, A7.0.1, A7.0.2, A7.1.3, A9.0.1, A9.2.1, S1.0.2,

DESIGN LOADS - ROOF:

- D.L. = 1.2 kPa
- SELF-WEIGHT: 0.5 kN/m
- L.L. = 3.1 kPa
- SNOW: S_s = 2.9 kPa, S_r = 0.7 kPa
- WIND: q_{1/50} = 0.48 kPa
- POINT LOAD: P_s = 2 kN
- RTU LOADS: 0.53 kN (120lb)
- MECH UNIT: 0.89 kN (200lb)
- SEISMIC LOADS AS PER STRUCTURAL S1.0.1 DRAWING

(Ref.: S1.0.1, S1.0.2, S2.2.1)

GENERAL NOTES :

- ERECT JOISTS WITH MARK IN UPRIGHT POSITION AT SAME END AS SHOWN ON PLANS
- FOR FIELD BOLT GRADES, SEE POINT TO POINT BOLT LIST, U.N.O.
- ELECTRODES FOR FIELD WELDS SHALL BE E49XX
- (S)-INDICATES SLOPE JOISTS

NOTES:

- (7) 24" DEEP O.W.S.J., TYP.
- JOIST SEAT DEPTH - 4", TYP.
- JOIST CAMBER = 5/8 (16mm), TYP.
- BOLTED JOIST SEAT CONNECTIONS
- BOLTED 2 LINES OF CROSS BRIDGING
- WELDED 3 LINES HORIZONTAL BRIDGING

-PIECE MARKS:

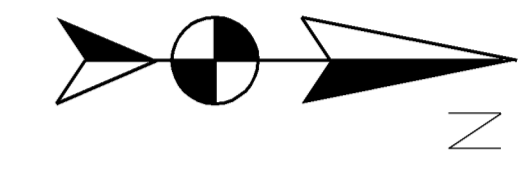
- J9101: JOISTS
- H910x: HORIZONTAL BRDG (L38X38X4.8)
- X910x: CROSS BRDG (L38X38X3.2)
- P910x: CONNECTION ITEMS

(Ref.: S2.2.1)

FIELD BOLT CONN. NOTE:

- JOIST SEAT CONNECTION BOLTS - ARE 3/4DIA A325,
- DIAGONAL BRIDGING CONNECTION BOLTS - ARE 1/2DIA A307B,
- BRIDGING WALL BRACKETS ARE CONNECTED TO WALL BY HILTI KB3 1/2DIA - EXP ANCHORS

- ALL BOLTS ARE SNUG TIGHT.



APR-07-2011	ISSUED FOR FABRICATION
MAR-21-2011	ISSUED FOR APPROVAL
NO BACK CHARGES WILL BE ACCEPTED WITHOUT PRIOR AUTHORIZATION IN WRITING	
NOTE:	
www.belairfabrication.com tel: 604 924 0845 fax: 604 924 0846	
JOB NAME & LOCATION: MR. LUBE CANADA LP 6811 HASTINGS STREET BURNABY, B.C.	
ARCH:	Omicron Architecture Engineering Construction LTD.
ENGR:	Omicron Architecture Engineering Construction LTD.
CONTR:	Willow Spring Construction (B.C.) Ltd.
REF: S102.S221	JOB NO: 013-25
DRAWN BY: DKL MAR/08/2011	CHECKED BY: DKL MAR/12/2011
SHEET TITLE: JOISTS - LAYOUT	DWG. NO: EJ1
MODIFIED DATE: 04/07/2011	LAST PLOT DATE: 03/21/2011
CAD FILENAME: MR	